

Biographies

Aileen Lee

Chief Program Officer, Gordon and Betty Moore Foundation's Environmental Conservation Program

Aileen is the chief of programs for the Gordon and Betty Moore Foundation. She oversees all grantmaking activity, including all program allocations, Grants Administration, and Adaptive Management and Evaluation. Aileen's previous roles at the foundation include leading the Environmental Conservation Program, as well as developing and leading the Wild Salmon Ecosystems and the Conservation and Markets initiatives.



Prior to joining the foundation, Aileen was an associate principal at McKinsey & Company, where she led client engagements in strategy, operations and organizational effectiveness across a wide range of sectors. She currently serves on the boards of the Theodore Roosevelt Conservation Partnership, Coral Reef Alliance, Biodiversity Funders Group, and the Climate and Land Use Alliance. She has previously served as chair of the board of the Environmental Grantmakers Association and treasurer of the Western Conservation Foundation.

She also volunteers with her hometown of Los Altos Hills as part of the Environmental Initiatives Committee. Aileen was born and raised on Long Island, New York. She attended Yale University, where she received a B.A. in political science and East Asian studies. She received her J.D. from Harvard Law School and is a member of the California bar.

Alvaro Umaña

Former Minister of Energy and Environment of Costa Rica

Dr. Alvaro Umana Quesada was Costa Rica's first Minister of Energy and Environment under President Oscar Arias (1986-1990). He holds a Ph D. in Environmental Engineering and a Masters in Economics from Stanford University, and a Masters in Environmental Pollution Control and BS in Physics from Penn State University.



Dr. Umana has been Costa Rica's Ambassador for Climate to COP1 in 1995 and to COP15 in 2009, when Costa Rica proposed its carbon neutrality initiative.

He has worked for many UN institutions including UNESCO, UNDP, the World Bank and the International Monetary Fund. Since 2009 he has been Senior Research Fellow at CATIE, an international center for higher education and research in tropical agriculture and forestry.

Prof Andrew Balmford FRS

Professor of Conservation Science, University of Cambridge

Andrew is a conservation scientist in the Department of Zoology, University of Cambridge, where his research focuses on how to reconcile biodiversity conservation with meeting human food needs and other land-demanding activities; the costs and benefits of retaining intact ecosystems; and identifying what works in conservation. He collaborates closely with conservation practitioners and with colleagues in other disciplines, including economics and psychology. In his book *Wild Hope* he argues that cautious, evidence-based optimism is vital in tackling environmental challenges.



Angela Andrade

Senior Climate Change and Biodiversity Policy Director-Conservation International, Colombia; Chair, IUCN Commission on Ecosystem Management

Angela Andrade is an Anthropologist from the Universidad de los Andes in Colombia, specialized in Geography and Rural Surveys and Msc in Ecology, from the ITC in the Netherlands. Chair of the Commission on Ecosystem Management of the International Union for Conservation of Nature since 2016. Senior Director of Climate Change and Biodiversity Policy at Conservation International Colombia, since 2009. Previously, she served as director of Ecosystems at the Ministry of Environment and Deputy Director of Geography of the National Geographical Institute in Colombia. She has more than 30 years of research experience in land ecology, land use planning, and environmental policy. For more than 15 years, she has been dedicated to Ecosystem based Adaptation policy and practice, and Nature based Solutions, as a response to the climate change and biodiversity crisis. She has led several EbA projects and has contributed to the development of the IUCN global Standard on Nature based Solutions.



Anna Armstrong

Senior Editor, Biology, Nature

Anna Armstrong is Senior Editor at *Nature*, handling research papers in ecology, food systems science and sustainability. Anna takes a keen interest in the ways in which research can inform responses to some of the challenges facing us, and has led collections that examine [the contribution that aquatic foods can make to future food systems](#), [how to transition to a sustainable ocean economy](#), and [the science that is helping to keep the vision of a more humane and environmentally sound future alive](#). Before joining *Nature* Anna worked as an editor at *Nature Geoscience* and *Nature Plants*. Anna's PhD in plant ecophysiology (University of York) was followed by postdoctoral research at the Australian National University.

Anne Christianson

Director, International Climate Policy, Center for American Progress

Anne Christianson is the Director of International Climate Policy at the Center for American Progress, an independent, non-partisan policy institute in Washington, DC. She has over fifteen years of environmental conservation and climate policy experience in the U.S. Congress, the White House, academia, and nongovernmental organizations. She holds a master's degree from the University of Oxford and a Ph.D. from the University of Minnesota, where her research focused on gender equity and ecosystem-based approaches to climate adaptation. She lives in Washington, DC.



Bibiana Vilá

Director of the VICAM (Vicunas, Camelids and Environment) Research Group, Argentina

Bibiana is a Biologist (Ph.D.). dedicated to biocultural studies of the conservation and traditional management of camelids as part of the Andean heritage. She is a specialist in vicuñas, their ecology, conservation, sustainable use, and cultural role for the altiplano communities (ethnobiology). She is also dedicated to environmental education in the Puna and capacity building for local communities. In addition, she works on the role of women in science and conservation.



Bob Litterman

Chairman of Risk Committee and Founding Partner of Kepos Capital

Bob Litterman is a founding partner of Kepos Capital and the Chairman of its Risk Committee. Prior to founding Kepos Capital in 2010, he enjoyed a 23-year career at Goldman Sachs & Co., where he served in research, risk management, investment, and thought leadership roles. He researched and published groundbreaking papers in asset allocation and risk management during his tenure at Goldman Sachs. He is co-developer of the Black-Litterman Global Asset Allocation Model. He is serving or has served on the board of Commonfund, Niskanen Center, Options Clearing Corporation, Resources for the Future, Robert Wood Johnson Foundation, the Sloan Foundation, the CFTC Climate Related Market Risk Subcommittee, and others.



Education: PhD in Economics from the University of Minnesota and a B.S. in Human Biology from Stanford University.

Kepos Capital, founded in 2010, is a registered investment adviser based in New York City. They manage over \$2 billion in assets for a global, institutional investor base. Their investment strategies span from systematic macro to carbon transition and carbon allowance markets. Their models seek to deliver returns that are lowly correlated to broad market indices and other investment programs, and they continually evaluate and improve their process in response to new findings, changes in market conditions, and industry competition.

Brad Wible

Senior Editor, *Science Magazine*

Brad Wible is Senior Editor at *Science* magazine, where he is responsible for soliciting and editing content for the weekly Policy Forum pages, as well as for occasional Editorials, and commentaries on social and behavioral science. Prior to *Science* he worked in university administration and communications at the Kellogg School of Management, and in research policy at the American Association for the Advancement of Science (AAAS). He was a AAAS Science and Technology Policy fellow at the U.S. National Institutes of Health, and a AAAS Mass Media Science and Engineering journalism fellow at the *Los Angeles Times*. He completed a BS in physics at Drexel University, a PhD in cognitive neuroscience at Northwestern University, and postdoctoral work at the University of Oregon. He lives in the woods in central Vermont, USA with his wife, two young children, and dog.



Carl Folke

Director, Beijer Institute of Ecological Economics of the Royal Swedish Academy of Sciences; Co-Founder, Stockholm Resilience Centre (Forum Planning Committee Member)

Professor Carl Folke is Director of the Beijer Institute, the Royal Swedish Academy of Sciences, and Founder, Science Director and Chair of the Board of the Stockholm Resilience Centre, Stockholm University, Sweden. Carl is a systems thinker in integrative science for sustainability, recognized internationally for research on social-ecological systems and the resilience of humanity and the planet. His work has illustrated how progress, prosperity and wellbeing will benefit from reconnecting development to the biosphere. Carl has a long record of science, policy and practice collaboration and is engaged in the arts-science interface. Carl is member of the Royal Swedish Academy of Sciences and the U.S. National Academy of Sciences.



Carlos Manuel Rodriguez
Chief Executive Officer and Chairperson, Global Environment Facility

Carlos Manuel Rodriguez was selected as CEO and Chairperson of the Global Environment Facility in June 2020.



Rodriguez, a Costa Rican national, was a pioneer in the development of Payment for Ecosystem Services and strategies for forest restoration, ocean conservation, and decarbonization. During his three terms as Environment and Energy Minister, Costa Rica doubled the size of its forests, made its electric sector fully renewable, and consolidated a national park system that has made the Central American country a prime ecotourism destination.

Rodriguez has also founded and served on the board of several environmental NGOs and tropical research institutes. After his second tenure as minister, he was Vice President for Global Policy at Conservation International for 12 years.

Carter Brandon
Senior Fellow, World Resources Institute

Carter Brandon is a Senior Fellow at World Resources Institute, where he leads work on the economics and finance of climate change adaptation and on natural capital. His primary interests are linkages between the environment, climate change, welfare and growth. Prior to that, he had a 24-year career at the World Bank, culminating as the Global Lead Economist for both the Environment/Natural Resources and Climate Change Departments. At the World Bank, he also held various other senior positions in Washington, Beijing and Buenos Aires. Before then, he started and ran the Development Economics Group, an economics consulting firm; made a documentary film on political unrest in Chiapas, Mexico; and played bassoon in the Paris Symphony. He graduated from Harvard and Oxford (DPhil, ABD, Agricultural Economics), where he was a Rhodes Scholar.



Carter Ingram
Executive Director, Pollination Group

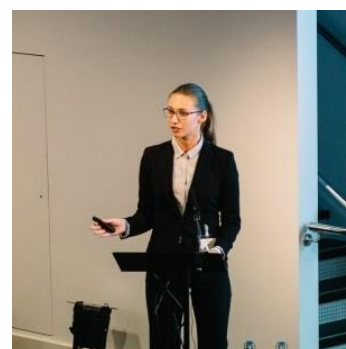
Carter Ingram is an Executive Director at Pollination where she advances natural capital and sustainable agriculture initiatives with private and public sector organizations. She has 20 years of experience at the forefront of integrating nature and development in Africa, Asia, Latin America, and the U.S. Prior to Pollination, Carter was a Senior Manager in EY's Climate Change and Sustainability Services practice and advised food, fiber and agriculture businesses with sustainability strategies/programs, focusing on natural capital.



Previously, Carter led the Ecosystem Services program and the Science for Nature and People Partnership (SNAPP) for the Wildlife Conservation Society. She completed a Post-doctoral fellowship at the Earth Institute of Columbia University and an M.Sc. and D.Phil. from the School of Geography and the Environment of Oxford University. She has co-edited 2 books and written over 60 publications on biodiversity, ecosystem services, and economic development. She is an Adjunct Professor in the School for Foreign Service at Georgetown University, serves on the Advisory Board for Terra Alpha Investments, SNAPP Science Advisory Council, and the Technical Advisory Council for the UNDP Equator Initiative, served on the International Working Group for the Taskforce on Nature-related Financial Disclosures, and recently co-led a USG working group on Natural Capital Accounting in the United States.

Christie Burley
Associate, Blackrock

Christie Burley is an Associate within the Aladdin Sustainability Lab team leading the development of methodology and new analytics to enable BlackRock's regulatory reporting. Ms. Burley partners closely with investors and clients across the organisation, providing both technical support and thought-leadership on sustainability-related topics. In addition to regulatory reporting, Ms. Burley co-leads the Biodiversity and Natural Capital working group within BlackRock and is also an advisor to the Corporate Sustainability Disclosure Committee at BlackRock.



Prior to joining BlackRock, Ms. Burley has worked in conservation at the United Nations Environment Programme and in the public, private and academic sphere leading techno-economic analysis for the commercialisation of sustainable fuels for aviation.

Ms. Burley holds an MSc in Environment and Development with a focus on econometrics and climate science from The London School of Economics and Political Science (LSE), a MicroMasters in Data, Economics, and Development Policy from Massachusetts Institute of Technology (MIT) and a BSc in Economics from Royal Holloway, University of London (RHUL).

David Blood
Senior Partner, Generation Investment Management

David Blood is a Founding Partner and Senior Partner of Generation Investment Management. He also serves as Chairperson of Just Climate. Previously, David spent 18 years at Goldman Sachs including serving as CEO of Goldman Sachs Asset Management. David received a BA from Hamilton College and an MBA from Harvard Business School.



David is chairperson of Social Finance UK and co-chair of the World Resources Institute and on the board of Dialight and On the Edge Conservation. David is also a life trustee of Hamilton College.

Edward Barker

Director, Natural Environment, Trees & Landscapes, Defra

Edward read Philosophy, Politics & Economics at the University of Oxford and has a Masters in Public Policy from the London School of Economics. He joined DEFRA in December 2018 and is now responsible for the Natural Environment, Trees and Landscapes directorate.



Prior to joining DEFRA he was a Director in the Department for International Trade establishing the UK's capability to pursue an independent trade policy outside the EU. This followed eight years leading for the UK in international negotiations including the EU-US Transatlantic Trade & Investment Partnership, EU-Japan FTA and bilateral investment treaties. He also represented the UK in the EU and at the OECD, G8 and WTO.

The rest of Edward's professional experience covers a wide range of domestic economic policy issues including regional and local governance in England, workplace skills development, competition policy and energy policy. He also served as Private Secretary to the then Secretary of State for Trade & Industry. He lived and worked for two years on secondment to a power company in the USA and has also lived and worked in South Africa.

Ehsan Masood

Bureau Chief, Editorials, Africa and the Middle East, Nature Portfolio

Ehsan Masood is a science journalist. Since 2019 he has been Nature's Editor for Editorials and also has responsibility for the journal's news coverage from Africa and the Middle East. He was Group Editor of Research Professional News (including Research Fortnight) until 2017 when he took up a Knight Science Journalism Fellowship at the Massachusetts Institute of Technology. He previously taught science and innovation policy at Imperial College for a decade until 2017. Ehsan is the author of a number of books and regularly makes documentary programmes at the intersection of science, finance, history and policy for BBC Radio 4. His latest book is *GDP: The world's most powerful formula and why It must now change* (Icon, 2021). You can catch the essence of his argument in this [interview on 'The Spark'](#). His previous books include *Dry: life without water* (with Daniel Schaffer, Harvard, 2006) and *Science and Islam: a history* (Icon, 2009). Documentary programmes include: '[Science: Right or Left?](#)', which explored why people who vote for right-wing parties are becoming less trusting of evidence and expertise, and '[Scientists of the Subprime](#)', which asked if insights from science could change the world of banking following the 2008 financial crisis.



Emily McKenzie

Technical Director, Taskforce on Nature-Related Financial Disclosures

Emily has worked for 20 years integrating nature in policy, finance, economics and decision-making. She currently acts as Technical Director for the Taskforce on Nature-Related Financial Disclosure (TNFD). Most recently, she led the analytical team that produced the Dasgupta Review on the Economics of Biodiversity, based at HM Treasury. She has previously been involved in a range of projects, including developing the Natural Capital Protocol with Capitals Coalition, leading the Natural Capital Project at Stanford University while working in the WWF Global Science team, designing the Environmental Land Management Scheme while based at the UK Department of Environment, Food and Rural Affairs, and working with the Joint Nature Conservation Committee and the Pacific Islands Applied Geoscience Commission.



Eric Lambin

Professor, Université Catholique de Louvain (Louvain-la-Neuve, Belgium) and Stanford University

Eric Lambin, a geographer and environmental scientist, divides his time between University of Louvain and Stanford University. His research tries to better understand the causes and impacts of land use changes in different parts of the world. His current research focuses on how private and public policies can reverse tropical deforestation. He published several broad audience books, including “*An Ecology of Happiness*” (University of Chicago Press, 2012). He is member of the European Commission’s Group of Chief Scientific Advisors.



Fiona Stewart

Lead Financial Sector Specialist, Finance, Competitiveness & Innovation, The World Bank

Fiona Stewart, Lead Financial Sector Specialist, joined the Long-term Finance Team in the World Bank’s Finance, Competitiveness & Innovation Global Practice in 2012. Fiona provides policy advice on pension and insurance market reform to governments and regulators around the world. She also helps coordinate the Bank’s work on sustainable finance, including representing the institution at the G20 Sustainable Finance Working Group, Co-Chairing the Finance Taskforce under the UN Decade on Restoration. She is currently acting as Secretary to the Coalition of Finance Ministers for Climate Change. From 2004, Fiona worked for the OECD’s Financial Affairs Division and led the Secretariat of the International

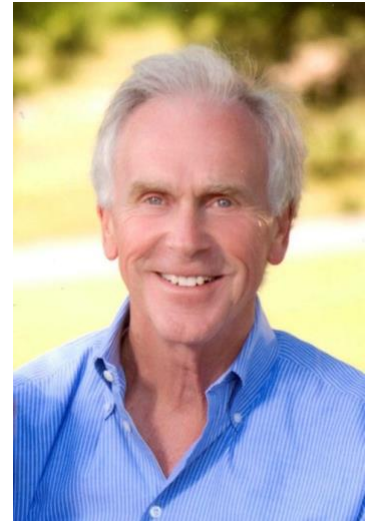


Organisation of Pension Supervisors (IOPS). Prior to the OECD, Fiona worked in the pension fund industry, including as Head of American Express Asset Management in Japan. She served on the advisory board of one of the OECD's pension funds and represents the World Bank staff on the organization's Pension Fund Committee. She holds degrees from Oxford and Johns Hopkins Universities and a Chartered Financial Analyst qualification.

Frank Nutter

President of Reinsurance Association of America

Mr. Nutter currently serves on the Advisory Board of the OECD's International Network for the Financial Management of Large-Scale Disasters, the RAND Center on Catastrophic Risk Management and Compensation, and the University of Cincinnati's Carl H. Lindner III Center for Insurance and Risk Management Advisory Board. Mr. Nutter serves on the Board of the [St. Baldrick's Foundation](#), the largest private funder of research grants to find a cure for childhood cancer. He is on the Editorial Panel of *Intelligent Insurer* magazine. He also serves as chair of [EdututorVA](#), which links college education majors for tutoring with underserved public school students.



He has recently served on the Advisory Board of the Center for Health and the Global Environment, an adjunct to the Harvard University School of Public Health, Council of the American Meteorological Society, and the Board of the University Center for Atmospheric Research, a consortium of universities managing the National Center for Atmospheric Research sponsored by the National Science Foundation. He has served as a member of the Board of Directors of the Advocates for Highway and Auto Safety, the Insurance Institute for Highway Safety, and the Worker's Compensation Research Institute, the Board of Overseers of the Institute for Civil Justice, a subsidiary of the Rand Corporation and on the Board of the Bermuda Institute for Ocean Sciences.

Mr. Nutter has a Juris Doctorate from the Georgetown University Law Center and a bachelor's degree in economics from the University of Cincinnati. The University of Cincinnati awarded Mr. Nutter the 2020 Kautz Alumni Masters Award. Mr. Nutter was an officer in the U.S. Navy and is a Vietnam veteran. He competed in the 2019 and 2022 Senior Olympics in cycling.

Gillian Lobo

Senior Lawyer, Acting Head of Litigation, Client Earth

Gillian is an experienced lawyer at environmental law charity ClientEarth. She is a qualified solicitor of England & Wales and holds a law degree from the University of Sheffield (LLB) and a masters in Law and Development (LLM) from the School of Oriental and African Studies.



Before joining ClientEarth she worked as a government lawyer undertaking a mix of work, including claims in negligence, human rights and public law. She also worked on the disability provisions in the Equality Act 2010.

Gillian joined ClientEarth in 2015 to develop its work on climate change litigation and to establish its Climate Accountability team. She has contributed to a broad range of ClientEarth's legal and policy work, including its successful and precedent setting clean air litigation and its work on environmental legislation following the UK's decision to leave the European Union. She was until late 2021 Head of UK Litigation with responsibility for managing ClientEarth's UK court cases, the UK Environment team and more generally coordinating the work of the programme teams in the UK. She is currently Acting Head of Litigation, supporting the development and delivery of ClientEarth's legal interventions.

Gim Huay Neo

Managing Director, Centre for Nature and Climate at the World Economic Forum

Ms Neo Gim Huay is Managing Director and Head of the Center for Nature and Climate at the World Economic Forum. The Centre is responsible for partnerships and programs relating to driving climate action, building a nature positive economy, regenerating food, water and ocean systems as well as resource management and preventing pollution.



Prior to the Forum, Gim Huay held various Managing Director roles in Temasek International, including Climate Change Strategy, Sustainability and Enterprise Development. Gim Huay was also a Management Consultant at McKinsey & Co in the Lagos, New York and San Francisco offices. She also served in the Singapore Public Service in the Finance and Trade Ministries, the Prime Minister's Office as well as the Singapore Embassy in the United States.

Gim Huay holds a Masters in Business Administration from Stanford University and a Masters of Engineering and Bachelor of Arts from Cambridge University.

Gretchen Daily (Forum Co-Chair)
Co-founder and Faculty Director, Stanford Natural Capital Project

Dr. Gretchen C. Daily is the Bing Professor of Environmental Science in the Department of Biology at [Stanford University](#), Director of the Center for Conservation Biology, Senior Fellow at the [Stanford Woods Institute for the Environment](#), and co-founder and Faculty Director of the Natural Capital Project. Daily's work is focused on understanding the dynamics of change in the biosphere, their implications for human well-being, and the deep societal transformations needed to secure people and nature. Her efforts span fundamental research and initiatives focused on valuing nature in policy, finance, and operations around the world. Daily has published several hundred articles and a dozen books, including *Nature's Services* (1997), *The New Economy of Nature* (2002), *Natural Capital* (2011), *The Power of Trees* (2012), and *Green Growth that Works* (2019). Daily is an elected fellow of the [U.S. National Academy of Sciences](#), the [American Academy of Arts and Sciences](#), and the [American Philosophical Society](#).



Harun Dogo
Executive Director, Global Sustainable Finance at Morgan Stanley

Harun Dogo is an Executive Director in the Global Sustainable Finance group at Morgan Stanley, where he helps clients raise and allocate capital for sustainability. Prior to joining the Firm, he was an economist at the World Bank, working on a wide range of sustainability and economic policy projects. Earlier in his career, he served as a staff member of the U.S. Senate Committee on Finance and was a policy analyst at the RAND Corporation. A graduate of the United States Air Force Academy, he also holds graduate degrees in applied physics and irregular warfare from the Naval Postgraduate School, and in policy analysis from the Pardee RAND Graduate School.



Henrik Österblom

Professor and Science Director, Stockholm Resilience Centre

Henrik Österblom is science director at Stockholm Resilience Centre, Stockholm University. His research focuses on governance, with a particular focus on science-business collaboration, development and use of novel technologies, and improved ocean management. He has been leading the keystone dialogues (2015-2022) and has taken part in shaping the [SeaBOS](#) initiative, with participation from ten of the largest seafood producers in the world.



Österblom has a master's degree in behavioural ecology from the Department of Zoology, Uppsala University (1998) and a PhD in marine ecology from the Department of Systems Ecology, Stockholm University (2006). He has spent extended periods of time for research at the Antarctic Climate and Ecosystems Cooperative Research Centre (ACE CRC), University of Tasmania, University of British Columbia Fisheries Centre and Tokyo University. Österblom has worked as commissioner and special advisor for the Swedish government (2002-2007).

Henrik is chairman of the SeaBOS fundraising foundation, board member of Race for the Baltic fundraising foundation, member of the SARAS2 (South American Institute for Resilience and Sustainability Studies) advisory board and member of the Expert Group of the High Level Panel for a Sustainable Ocean Economy.

Ian Bateman, OBE

Professor of Environmental Economics, Director of the Land, Environment, Economics and Policy Institute (LEEP) and Director of the South West Partnership for Environment & Economic Prosperity (SWEEP), University of Exeter (Forum Planning Committee Member)

Ian J. Bateman OBE, US-NAS, FBA, FRSA, FRSB, is Professor of Environmental Economics and Director of the Land, Environment, Economics and Policy Institute (LEEP) at the University of Exeter, UK. Professor Bateman has been awarded a Royal Society Wolfson Research Merit award and is a Member of the Natural Capital Committee (reporting to the Chancellor of the Exchequer). He is also



a Board Member of the UK Joint Nature Conservation Committee and a member of the Environment Agency LTIS-DG). He led the economics team for the UK National Ecosystem Assessment (UK-NEA) and NEAFO and the NERC Valuing Nature Network, bringing together business and policy decision makers with research experts to examine natural environment and economic issues. Prof. Bateman has written over 130 peer-reviewed papers in the leading journals in natural science (e.g. Science, PNAS), economics (e.g. QJE, REStat) and interdisciplinary analyses (e.g. JEEM, EcolEc). He has been PI/Col on over 70 grants worth in

excess of £30m and in 2013 was awarded an OBE for services to environmental science and policy.

John Holdren

President Obama's Science Advisor 2009-2017

Dr. John P. Holdren is the Teresa and John Heinz Research Professor of Environmental Policy at Kennedy School of Government, Co-Director of the School's Science, Technology, and Public Policy program, Professor of Environmental Science and Policy, Emeritus, in the Department of Earth and Planetary Sciences, and Affiliated Professor of Environmental Science and Engineering, Emeritus, in the John A. Paulson School of Engineering and Applied Science, all at Harvard University. From January 2009 to January 2017, he was President Obama's Science Advisor and Senate-confirmed Director of the White House Office of Science and Technology Policy (OSTP). Trained in aerospace engineering and theoretical plasma physics at MIT and Stanford, he specializes in energy technology and policy, causes and consequences of global climate change, and international security and arms control. He is a member of the U.S. National Academy of Sciences and the U.S. National Academy of Engineering, as well as a Foreign Member of the Royal Society of London.



Joseph Lowe

Editor of the Green Book, Head of Economics Branch GEP, HM Treasury

Joseph joined the UK Government Economic Service in 2003 as Head of Preliminary Investigations at the Office of Fair Trading. This post retirement position followed a long career in both public and private business during which he worked in the UK energy industry (Gas and Electricity) and International non-ferrous metals and mining. His career began in 1970 in the international metals industry where he worked for several organisations eventually becoming chief statistician at the World Bureaux of Metal Statistics. His career with British Gas began in 1975 and progressed through a number of increasingly senior technical and managerial positions, before, during and after its privatisation. He was for some years a senior consulting director working with companies in the energy, telecommunications, IT and financial services industries. After retirement he joined the civil service in 2003.



Since 2006 Joseph Lowe has been Editor of HM Treasury's' Green Book and Head of Economics of Social Welfare in the spending side of HM Treasury. The Green Book is central government guidance on the appraisal of spending and investment. He was the technical lead in the team which conducted the Green Book Levelling Up Review in 2020. He is responsible for the architecture of the 2020 edition and for the majority of the drafting of this edition first published in November 2020. He is also the author of several papers, published as Treasury guidance, that

apply economics to questions of public finance. He is the also executive editor of the Treasury guidance on the development of Project and also Programme, Business Cases.

He is a graduated in Economics with Maths and Statistics and qualified at post graduate as a Fellow of the Institute of Statisticians and is therefore a Chartered Statistician.

Kathy Segerson
Professor, University of Connecticut

Kathleen Segerson is a Board of Trustees Distinguished Professor of Economics and Associate Dean of The Graduate School at the University of Connecticut. She is an environmental economist, whose research focuses on the incentive effects of alternative environmental policy instruments, with applications in the following areas: groundwater contamination, hazardous waste management, land use regulation, climate change and nonpoint pollution from agriculture. She also works on ecosystem services and the protection of marine species.



Dr. Segerson was recently elected as a member of the National Academy of Sciences, and is a fellow of the Association of Environmental and Resource Economists and of the American Agricultural Economics Association. She has or is currently serving on a number of advisory boards, including the U.S. Environmental Protection Agency's Science Advisory Board and the Committee on Valuing the Protection of Ecological Systems and Services, the National Academy of Science Advisory Committee for the U.S. Global Change Research Program and Review Panel on the National Climate Assessment, the National Research Council's Board on Agriculture and Natural Resources, and the Advisory Board of the Beijer Institute of Ecological Economics in Stockholm. Dr. Segerson holds a PhD from Cornell University and a BA from Dartmouth College.

Kathy Willis, CBE
Professor of Biodiversity and Head the Oxford Long-term Ecology group, University of Oxford; Member of the UK Government's Natural Capital committee (Forum Planning Committee Member)

Katherine Willis CBE is Professor of Biodiversity in the department of Biology and the Principal of St Edmund Hall, University of Oxford. She has also recently been appointed as a Crossbench (non-political) Peer in the House of Lords. Previous roles include Director of Science at the Royal Botanic Gardens, Kew (2013-2018) and a member of the UK Government's Natural Capital Committee (2015-2020). She has over 30 years of research experience focusing on modelling and remotely determining important landscapes for biodiversity and ecosystem services and working with stakeholders across the world to bring about nature-positive outcomes. She has also been closely involved in the scrutiny of the scientific



evidence-base underpinning International, UK and local government policies associated with conservation of biodiversity and nature-based interventions for mitigation of climate change.

Lawrence Wigham
Senior Economist at HM Treasury



Lena Chan
Senior Director of the International Biodiversity Conservation Division, National Parks Board of Singapore

Dr Lena Chan is the Senior Director of the International Biodiversity Conservation Division, National Parks Board (NParks) of Singapore. Some initiatives that Dr Chan has worked on include the development and updating of the Singapore Index on Cities' Biodiversity, drafting of NParks' Nature Conservation Masterplan, and supervising the Pulau Tekong Coastal Protection and Mangrove Enhancement project, etc.



Lena's current official duties cover being the National Focal Point for the Convention on Biological Diversity, a Governing Board member of the ASEAN Centre for Biodiversity, Co-Chair of the World Economic Forum Global Commission on BiodiverCities by 2030, Co-Chair of the ICLEI City with Nature Knowledge & Research Hub, a member of the Biophilic Cities Network's Advisory Board, etc. She has published scientific papers on ecology, parasitology and women and the environment, and chapters in books on conservation biology. She co-edited supplements of the Gardens' Bulletin Singapore that were dedicated to a biodiversity survey of the Central Nature Reserve published in 1997 and a comprehensive biodiversity survey of the Bukit Timah Nature Reserve published in 2019.

She obtained her M. Sc. from McGill University and her Ph. D. from Imperial College, London.

Mary Ruckelshaus

Managing Director, Natural Capital Project

Mary Ruckelshaus is the Director of The Natural Capital Project (NatCap) and a Senior Research Associate at Stanford University. Mary has previously held leadership positions with the US government (National Oceanic and Atmospheric Administration) and was an Assistant Professor of biological sciences at The Florida State University. The main focus of her recent work is on developing standard approaches for valuing nature and mainstreaming them into high-leverage decisions globally. She has been a lead author and reviewer for the 2013 and 2017 US National Climate Assessments. Ruckelshaus is currently on the Board of the Wild Salmon Center, and the WD Ruckelshaus Center at the University of Washington and Washington State University; and has served on the Board of Directors for The Nature Conservancy, COMPASS, and is past Chair of the Science Advisory Board of the US National Center for Ecological Analysis and Synthesis (NCEAS). Ruckelshaus has a bachelor's degree in human biology from Stanford University, a master's degree in fisheries from the University of Washington, and a doctoral degree in botany, also from Washington.



Rebecca Shaw

Chief Scientist and Senior Vice President, World Wildlife Fund

Dr. Rebecca Shaw is Chief Scientist and Senior Vice President at World Wildlife Fund. She works with experts around the world to identify the emerging challenges to WWF's mission and advance scientific inquiry to develop strategic solutions to those challenges. She leads WWF's Global Science team whose research agenda informs WWF's global conservation framework and identifies tools critical to achieving WWF's goals. She has been published widely in leading peer-reviewed scientific journals such as *Science and Nature* and is the recipient of numerous awards for her academic and non-academic work. She was also a lead author on the Intergovernmental Panel on Climate Change's Fifth Assessment Report focused on impacts, adaptation, and vulnerability. Dr. Shaw holds an M.A. in environmental policy and a Ph.D. in energy and resources from the University of California, Berkeley.



Robert Schoellhammer**Representative, European Representative Office (ERO), Asian Development Bank (TBC)**

Robert Schoellhammer started at the Asian Development Bank (ADB) in 2000 managing projects in east and central Asia. He later worked with other development banks to set up the *Climate Investment Funds*, and the *Global Agriculture and Food Security Program*. He has also served as ADB's Country Director to Mongolia and as Adviser to the Director General on East Asia. As ADB's representative to Europe he manages the bank's relationship with its 17 European member countries. In the early 1990's he lectured in economics and English at Mongolia's civil service college, followed by advisory roles at the education ministry in the Kyrgyz Republic and at the Ukrainian Ministry of Defence. At the African Development Bank from 1997-2000 he managed projects in Ethiopia, Mauritius, the Seychelles and Uganda. Mr. Schoellhammer holds a Bachelor's degree in development economics from the University of East Anglia, and a Masters degree in agriculture from the University of Aberdeen.

**Rosina Bierbaum****Roy F. Weston Chair of Natural Economics; Chair, Scientific and Technical Advisory Panel, Global Environment Facility; Research Professor, University of Maryland's School of Public Policy; Professor of Environmental Policy and Planning, University of Michigan School of Natural Resources and Environment (Forum Planning Committee Member)**

Dr. Rosina Bierbaum is Dean Emerita and Professor at the University of Michigan's School for Environment and Sustainability and the Roy F. Weston Chair of Natural Economics at the University of Maryland. Bierbaum's experience extends from climate science to foreign relations and international development. Rosina served for two decades in both the legislative and executive branches of the U.S. Government, and ran the first Environment Division of the White House Office of Science and Technology Policy. She chairs the Science and Technical Advisory Panel of the Global Environment Facility. Bierbaum is a member of the National Academy of Sciences, a Fellow of the American Academy of Arts and Sciences, the American Association for the Advancement of Science, the Ecological Society of America, and Sigma Xi. Bierbaum received the American Geophysical Union's Waldo Smith award for 'extraordinary service to Geoscience' and the Environmental Protection Agency's Climate Protection Award. She has authored key reports on climate for the World Bank, the Congress, the White House, and the United Nations. She has lectured on every continent.



Sandra Diaz

Professor of Community and Ecosystems Ecology, Córdoba National University; Senior Principal Researcher, Argentine National Research Council (Forum Planning Committee Member)

Sandra Díaz is Professor of Ecology at Córdoba National University, senior member of the Argentine National Research Council and Visiting Professor at the School of Geography and the Environment, Oxford University. She is interested in plant functional traits and syndromes, their effects on ecosystem properties and their interactions with global change drivers. She constructed the first



global quantitative picture of essential functional diversity of vascular plants – the global spectrum of plant form and function. She has advanced theory and practical implementation of the concept of functional diversity and its effects on ecosystem properties and benefits. She combines her ecology studies with interdisciplinary work on how different societies value and reconfigure nature. She founded [Núcleo DiverSus on Diversity and Sustainability](#), and co-founded the Global Communal Plant Trait Initiative [TRY](#). She co-chaired the Global Assessment of the [Intergovernmental Platform on Biodiversity and Ecosystem Services](#). She is a member of the Academies of Sciences of Argentina, USA, France, Norway, Latin America and the Developing World, and Foreign Fellow of the British Royal Society. Her awards include the Margalef Prize in Ecology (2017), the Gunnerus Award in Sustainability Science (2019), the Kew International Medal (2020) and the BBVA Frontiers of Knowledge in Ecology and Conservation Award (2021).

Sharad Lele

Senior Fellow and Convener, Centre for Environment & Development, Ashoka Trust for Research in Ecology and the Environment, Bangalore

Sharachchandra (Sharad) Lele co-founded the Centre for Interdisciplinary Studies in Environment & Development in 2001, and led it till 2009, when it merged with the Ashoka Trust for Research in Ecology and the Environment ([ATREE](#)). He is now the [Distinguished Fellow](#) in Environmental Policy & Governance at ATREE. He is also [Adjunct Faculty](#) at the Indian Institute of Science Education and Research Pune and Honorary Professor at Shiv Nadar University Delhi.



Sharad is an interdisciplinary environmental researcher, bridging the natural sciences, economics, and political science to understand the concepts of and pathways to environmentally sustainable and socially just development. He has worked on sustainable forest management and forest governance, forest hydrology and farmer linkages, land use change, watershed development, water governance, urban water management and pollution regulation. This research has been published in a variety of interdisciplinary journals. Sharad has also co-authored a book on "[Community-based Natural Resource Management in South Asia](#)", (Sage:2007), and edited "[Democratising Forest Governance in India](#)" (OUP: 2014) and "[Rethinking](#)

[Environmentalism: Linking Justice, Sustainability and Diversity](#)” (MIT Press: 2018). Sharad also writes frequently for English, Kannada and Marathi newspapers in India. He teaches courses in Interdisciplinary Research Approaches and Environmental Policy and Governance in ATREE’s PhD programme in Sustainability Studies and MSc programme in Conservation Practice.

Simon Harold

Senior editor, Nature Ecology & Evolution

Simon is a Senior Editor at *Nature Ecology & Evolution*, having been part of the journal’s launch team in 2016. Prior to that he was the ecology editor at *Nature Communications*, and in 2020 spent a year on secondment as locum Chief Editor at *Nature Geoscience*. Simon has PhD in host-natural enemy ecology from the University of Leeds and the UK Centre for Ecology & Hydrology, and has previously worked at the *BMC*-series journals, University of Manchester, and NERC Centre for Population Biology.



Sonja Sabita Teelucksingh

Adviser to the CEO, Global Environment Facility

Sonja Sabita Teelucksingh is an environmental economist from Trinidad and Tobago. She holds a B.Sc. in Economics from the University of the West Indies (Trinidad), and a Ph.D. in Environmental Economics and Management from the University of York (UK). She worked in academia before joining the Global Environment Facility (GEF) where over time she has served in a number of capacities. She is currently the Advisor to the GEF CEO.



Stephen Polasky

Regents Professor, Fesler-Lampert Professor of Ecological/Environmental Economics, University of Minnesota (Forum Planning Committee Member)

Stephen Polasky is a Regents Professor and the Fesler-Lampert Professor of Ecological/Environmental Economics at the University of Minnesota. His research focuses on issues at the intersection of ecology and economics including the value of ecosystem services and natural capital, biodiversity conservation, land use, sustainability, common property resources, and environmental regulation. He is a co-founder of the Natural Capital Project. He served as Senior Staff Economist for environment and resources for the President’s Council of Economic Advisers 1998-1999. He was a coordinating lead author on nature’s contributions to people for the Global Assessment of the Intergovernmental Science-Policy Platform for Biodiversity and Ecosystem Services (IPBES). He is a member of the National Academy of Sciences, and a Fellow of the Association of Environmental and Resource Economists, the American Academy of Arts and Sciences, and the American Association for the



Advancement of Science. He received a Ph.D. in economics from the University of Michigan in 1986.

Susan R. Wessler

Professor, University of California, Riverside

Home Secretary, National Academy of Sciences

Susan Wessler is the Distinguished Professor of Genetics at the University of California Riverside and home secretary of the National Academy of Sciences. She is a molecular geneticist known for her contributions to the field of transposon biology, specifically on the roles of plant transposable elements in gene and genome evolution. Her laboratory has pioneered the use of computational and experimental analyses in the identification of actively transposing elements. A native of New York City, Wessler received her bachelor's degree in biology from the State University of New York at Stony Brook in 1974 and her PhD in Biochemistry from Cornell University in 1980. She was a postdoctoral fellow of the American Cancer Society at the Carnegie Institution of Washington from 1980-1982. She began her career at the University of Georgia in 1983 where she remained until moving to the University of California, Riverside in 2010. At present she is an Associate Editor of the Proceedings of the National Academy of Sciences and is on the Editorial Board of Current Opinions in Plant Biology and on the Board of Reviewing Editors of the journal Science. Wessler has contributed extensively to educational initiatives, including co-authorship of the widely used genetics textbook, "Introduction to Genetic Analysis," and the popular reference book, "The Mutants of Maize." As a Howard Hughes Medical Institute Professor, she adapted her research program for the classroom by developing the Dynamic Genome Courses where incoming freshmen can experience the excitement of scientific discovery in the state-of-the-art Neil A. Campbell Science Learning Laboratory. She is the recipient of several awards including the Creative Research Medal (1991) and the Lamar Dodd Creative Research Award (1997) from the University of Georgia, the Distinguished Scientist Award (2007) from the Southeastern Universities Research Association (SURA), the Stephen Hales Prize (2011) from the American Society of Plant Biologists, and the Excellence in Science Award from FASEB (2012). She is a fellow of the American Association for the Advancement of Science and the American Academy of Arts and Sciences.



Timothée Pasqualini

Research Lead - Nature Benchmark, World Benchmarking Alliance

Timothée is currently leading a team of research analysts at the World Benchmarking Alliance (WBA) focusing on nature and biodiversity. Tim has worked for WBA for over four years, where he first worked on the Access to Seeds Index, which scrutinizes the links between the seed industry and smallholder farmers, and then the Seafood Stewardship Index, looking at the 30 largest seafood companies in the world are adopting ecologically and socially responsible strategies. After working on the Food and Agriculture Benchmark with 350 companies



across the whole global food value chain, Tim and his colleagues developed a methodology for the Nature Benchmark, following a multi-stakeholder approach. His team has recently begun to study whether and how 1,000 large, influential companies across 22 industries are contributing to a nature-positive future. Tim holds a Master of Science in Environmental Sciences, Policy and Management (MESPOM) from the Central European University and University of Manchester, and a Bachelor of Arts and Science from McGill University.

Tom Evans

Lead, Forest Conservation and REDD+, Wildlife Conservation Society

Dr Tom Evans has worked in the WCS Forest and Climate Change program since 2012. He leads the Intact Forests Initiative and coordinates the Forests for Life partnership. He has a particular interest in mobilizing climate finance, policy change and on-the-ground action to secure the world's major intact forest carbon sinks. WCS has more than 50 country programs globally, targeting more than 70 land- and seascapes and covering many of the world's most significant forest regions from the Canadian Boreal to Melanesia.



Tom spent the first stage of his career as a field biologist, surveying threatened birds and mammals in the Philippines, Tanzania and Lao PDR, then did his PhD on non-timber forest product use in collaboration with the University of Oxford, Kew and the Lao National Agriculture and Forestry Research Institute. He joined WCS full time in 2004 and spent the first nine years as technical advisor and then Deputy Director with the WCS Cambodia Program, where among other things he led the development of the voluntary market REDD+ project in what is now Keo Seima Wildlife Sanctuary and supported one of the first Indigenous communities in the country to obtain their collective land title.

Tong Wu

Ecosystem Services Researcher, Arizona State University/Tsinghua University

Tong Wu is a Research Scholar with the Natural Capital Project and the Freeman Spogli Institute for International Studies at Stanford University. His research interests lie at the intersection of ecology, economics, and epidemiology, with a particular focus on the challenges and prospects of sustainable development in China. Topics that he has recently worked on include the mainstreaming of ecosystem services in management and planning, the role of nature in improving public health outcomes, and strategies for climate change mitigation and adaptation. Currently, a major focus of his work is the development of gross ecosystem product (GEP) as a policy instrument for aligning environmental and socio-economic imperatives. Tong received his bachelor's degree from the University of California, Berkeley and his doctorate from Arizona State University. He previously held positions at the Chinese Academy of Sciences, the University of

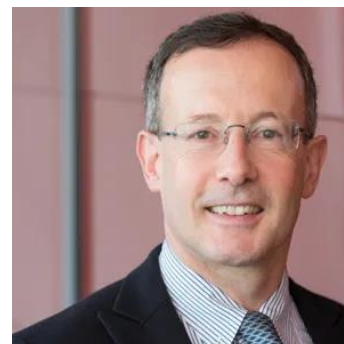


Minnesota, Tsinghua University, Northern Arizona University, and the University of California, Berkeley.

Torsten Thiele

Founder, Global Ocean Trust

Torsten Thiele is an economist and an expert in ocean governance and sustainable blue finance, drawing on over 20 years experience in project and infrastructure finance with leading financial institutions. He is Founder of Global Ocean Trust, a Member of the IUCN World Commission on Protected Areas and Senior Advisor to the Blue Natural Capital Financing Facility. Mr Thiele consults for international bodies on ocean governance and policy, marine biodiversity, the sustainable blue economy and innovative blue finance and is a frequent conference speaker on ocean solutions.



Recent publications address climate policy, coastal infrastructure finance, nature-based solutions and innovative ocean funding mechanisms. Torsten Thiele holds graduate degrees from the universities of Cambridge, Bonn and Harvard and sits on the Advisory Board of the Deep Ocean Stewardship Initiative and on the Scientific Committee of the Ocean-Climate Platform.

Unai Pascual

Professor, Basque Centre for Climate Change

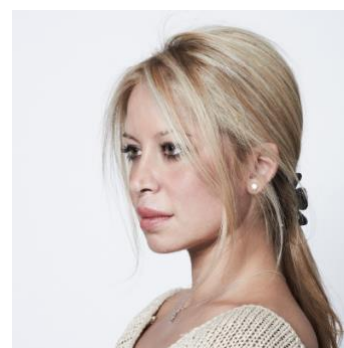
Unai Pascual is Ikerbasque Research Professor in ecological economics and policy at the Basque Centre for Climate Change (BC3) in Bilbao (Spain). He was senior lecturer at the University of Cambridge (2002-13) and at Manchester University (2000-02). He is interested in the interactions between climate change, biodiversity and ecosystem services from a social-ecological systems perspective. He has served in various Scientific Steering Committees (Diversitas, EcoSERVICES, Global Land Programme). He is currently co-chairing the Values Assessment of IPBES (2018-22).



Vian Sharif

Head of Sustainability, FNZ

Dr Vian Sharif's work centres on driving the development of innovative technology solutions to catalyse the shift to more sustainable capital allocations with a focus on nature. Her work includes collaborating with academics at Cambridge and Oxford Universities on the development of science-based insights for investor decision-making with a focus on nature risk and impact, including the Benchmark for Nature Project, the Cambridge AI for the study of Environmental Risks Centre and as a guest researcher at the Oxford Martin School. She heads sustainability at financial investment technology firm FNZ and prior to this she spent over a decade in the global asset management industry. As part of a number of governmental and international sustainability advisory groups, she was a guest



researcher at the Oxford Martin School, Member of the Taskforce for Nature Related Financial Disclosures Technical Experts Group and the U.K. Government's Business Advisory group to the Convention on Biological Diversity. She holds a PhD in environmental behaviour change, and a masters degree from Cambridge University.

Yadvinder Malhi, CBE FRS (Forum Co-Chair)

Professor of Ecosystem Science, University of Oxford and Director, Leverhulme Centre for Nature Recovery

Prof Yadvinder Malhi is Professor of Ecosystem Science at the University of Oxford, and Director of the new Leverhulme Centre for Nature Recovery. His research focuses on interactions between the biosphere and climate change, including the multi-disciplinary challenge of delivering effective and socially inclusive nature recovery at scale. He is President of the British Ecological Society, a Trustee of the Natural History Museum of London and chairs a number of activities in the Biodiversity Programme of the Royal Society.

